



+ 33 (0)4 27 26 01 94

info@ausec.fr

www.ausec.fr

23 ZA Les Épalits, 42610 St-Romain-le-Puy/France

Follow our news on Facebook and LinkedIn





Ausec is a French company that develops and markets products designed to protect property and equipment against floods and water damage.

Context

Climate change is causing extreme weather events resulting in flooding. Floods are becoming more violent and frequent and are affecting new areas not previously exposed.

Unchecked, water can be destructive. Whether it comes from heavy rains, a river overflowing or a pipe rupture, the damage can be considerable, both psychologically and financially.

Our origin

After 2 years of research, Ausec was born in 2020 within the APROTEK group. Specialised in liquids management, this entity assists companies that are confronted with sludge and liquids management issues.

Its experience enables Ausec to benefit from solid expertise and knowledge to develop technical products for the flood and water damage markets.

Our markets (in figures)

Flood	Water damages
<ul style="list-style-type: none">• 145 million people touched per year• Cost of global flooding: 36,9 billions of dollars in 2014	<ul style="list-style-type: none">• 1 million of claims/years in France• Average cost of a claim: €1,500 per insured person

Our innovations

This combination of skills has enabled Ausec to invest in new patented technology and to develop innovative products.

Our labels



« Efficient Solution »
Solar Impulse Foundation
February 2021



« GreenTech Innovation »
Ministry of Ecological
Transition - May 2021

Our values

- **EXPERTISE** - developing and combining new technologies to offer the best products to our customers.
- **RESPONSIBILITY** - securing our customers property in the event of water damage.

Made in
France



A HUMAN
SIZE FIRM



CONFIDENCE



ENVIRONMENTAL
AWARENESS

OBLOC

THE ANTI-FLOODING RANGE



OBLOC

Barriers

Anti-flood bags and socks.

Absorb, block and divert water and sludge of a flood.

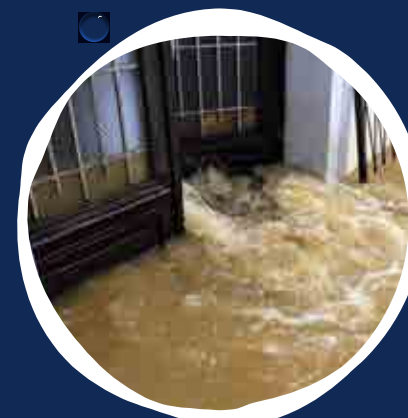


OBLOC

Drying up

Post-flood dewatering solution.

Limits water infiltration.
Facilitates post-flood cleaning.



- ANTICIPATE
- PROTECT
- CLEAN



OUR PATENTED INNOVATION

- Low product storage due to permanent and non-permanent welding technique.
- Homogeneous, fast and optimal product activation thanks to the compartmentalization of the superabsorbent polymer.
- Excellent liquid retention capacity thanks to our research and laboratory tests.



Flood protection barriers.



Made in
France



Absorbs, retains and deflects flood water.



WHAT IS IT?

OBLOC® Barriers, it's the **flood barrier**. The product is composed of organic polymers confined in a polypropylene non-woven. This lightweight bag with a very thin appearance increases its volume up to 24 times when activated in contact with water. This technology **absorbs**, **blocks** and **deflects** water and sludge during a flood.



WHY?

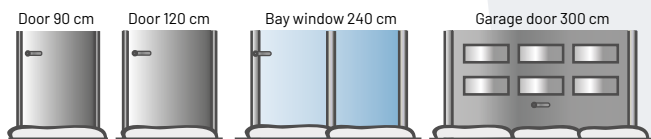
Floods are a natural risk that is becoming **more and more frequent**, a dramatic consequence of global warming. Flood-risk areas are expanding, leading everyone to anticipate this risk by protecting themselves. Current solutions are expensive or not very efficient (sandbags). **OBLOC®** is the most efficient protection to prevent water intrusion in houses.



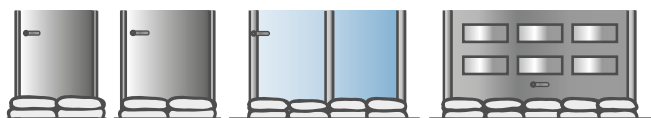
BENEFITS

- **OBLOC®** allows an autonomous and quick intervention before a flood.
- **OBLOC®** prevents water intrusion in housing.
- **OBLOC®** is a hundred times lighter and thirty times less voluminous than a sandbag.
- **OBLOC®** optimizes storage and is therefore easily accessible in an emergency.

APPLICATIONS



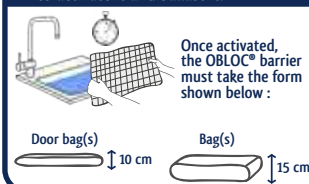
Door flood bag(s) : protection up to 10 cm high



Bag(s) : protection up to 30 cm high
(above 30 cm, double with a second row of bags)

DIRECTIONS FOR USE

1. Immerse the OBLOC® barrier in a sink or basin filled with water for 3 minutes to activate it and ballast it.

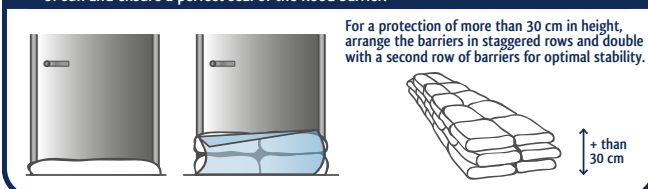


Once activated, the OBLOC® barrier must take the form shown below :

2. Position the tarpaulin on the ground in front of the area to be protected. If necessary, cut it in the format of the area to be protected.



3. Position the OBLOC® barriers edge to edge one another on the tarpaulin installed on the prior. Then, fold the cover over the OBLOC® barriers in order to protect them from the rays of sun and ensure a perfect seal of the flood barrier.



For a protection of more than 30 cm in height, arrange the barriers in staggered rows and double with a second row of barriers for optimal stability.

+ than
30 cm

OUR PATENTED TECHNOLOGY

The **segmentation** of the product by a system of non-permanent welds allows the barrier to activate **quickly** and **evenly**. Our research and laboratory tests give to the product an **excellent water retention capacity**.



STORAGE

OBLOC® should be stored in a **dry place** at a temperature between 5 and 30°C. The product lifetime in its initial packaging is 3 years. Once activated, the bags have a lifetime of approximately **2 months**, if not exposed to sunlight.

SIZE & PACKAGING

- **BAG** : 60*38*15 cm (by 4 or 10 units).
- **DOOR FLOOD BAG** : 120*18*10 cm (per unit).
90*18*10 cm (per unit).

Other sizes and packagings **on request**.

ENVIRONMENT

OBLOC® offers total safety with respect to environment and human health.

DISPOSAL OF THE PRODUCT



- **Service area** (according to town hall).
- **Recycling center**.
- **Exposure to UV radiations** for a natural evaporation.

Procedures or disposal of the product are available on the technical data sheet or on www.ausec.fr.

OBLOC

Drying up



The post-flood dewatering solution.



Made in
France



Limits water infiltration. Facilitates post-flood cleaning.

WHAT IS IT?

OBLOC® Drying up, it's the post-flood **dewatering solution**. The product is composed of organic polymers that **gel instantly** on contact with water. This formulation **solidifies the sludge** and water that has entered the house during the flood.



WHY?

Current climate change is leading to **extreme weather events**, resulting in **increasingly large and frequent floods**. Very localized and difficult to prevent, these sudden rises in water levels are tragic both humanly and financially. In order to reduce the costs generated by these disasters, **OBLOC®** operates as an efficient solution for post-flood cleaning.

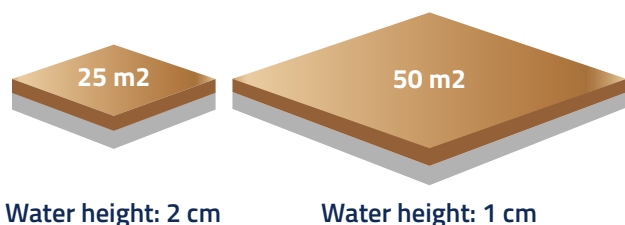


BENEFITS

- **OBLOC®** allows an autonomous and quick intervention in front of the disaster.
- **OBLOC®** limits water infiltration.
- **OBLOC®** reduces the time for rehabilitation works.
- **OBLOC®** decreases rehabilitation costs.

REPRESENTATION

SIMULATION - Flooding 500 L



DIRECTIONS FOR USE

1. With the sprinkling opening, pour OBLOC® evenly using the graduated scale.

2. Let OBLOC® act for about 5 to 10 minutes.

3. If the solution contains sludge, collect with a tool to speed up solidification.

4. Using a shovel, scrape off the product and sort it according to the situation*.

DOSAGE

OBLOC® is able to absorb up to **300 times** its weight. 2.4 kgs of product can absorb up to **500L** of liquid. It is advisable to adapt the dosage of **OBLOC®** according to the water content and the type of waste present in the post-flood water. The graduation on the product label allows a good dosage when using **OBLOC®**.

STORAGE

OBLOC® should be stored in a dry place at a temperature between 5 and 30°C. The shelf life of the product in its initial packaging is 5 years.

PACKAGING

OBLOC® is packaged in kit of 4 jars (600 g each).

Buckets of 25 kg are available **on request**.

ENVIRONMENT

OBLOC® offers a total safety towards the environment and human health. Non-polluting and non-irritating product. **Biodegradable** product according to the **RF 14995 standard**.

DISPOSAL OF THE PRODUCT



Service area (according to town hall).



Recycling centre.



Household waste.

Procedures or disposal of the product are available on the technical data sheet or on www.ausec.fr.

*Procedures or disposal of the product are available on the technical data sheet or on www.ausec.fr.